

KEY NOTES

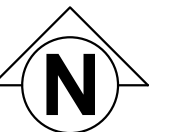
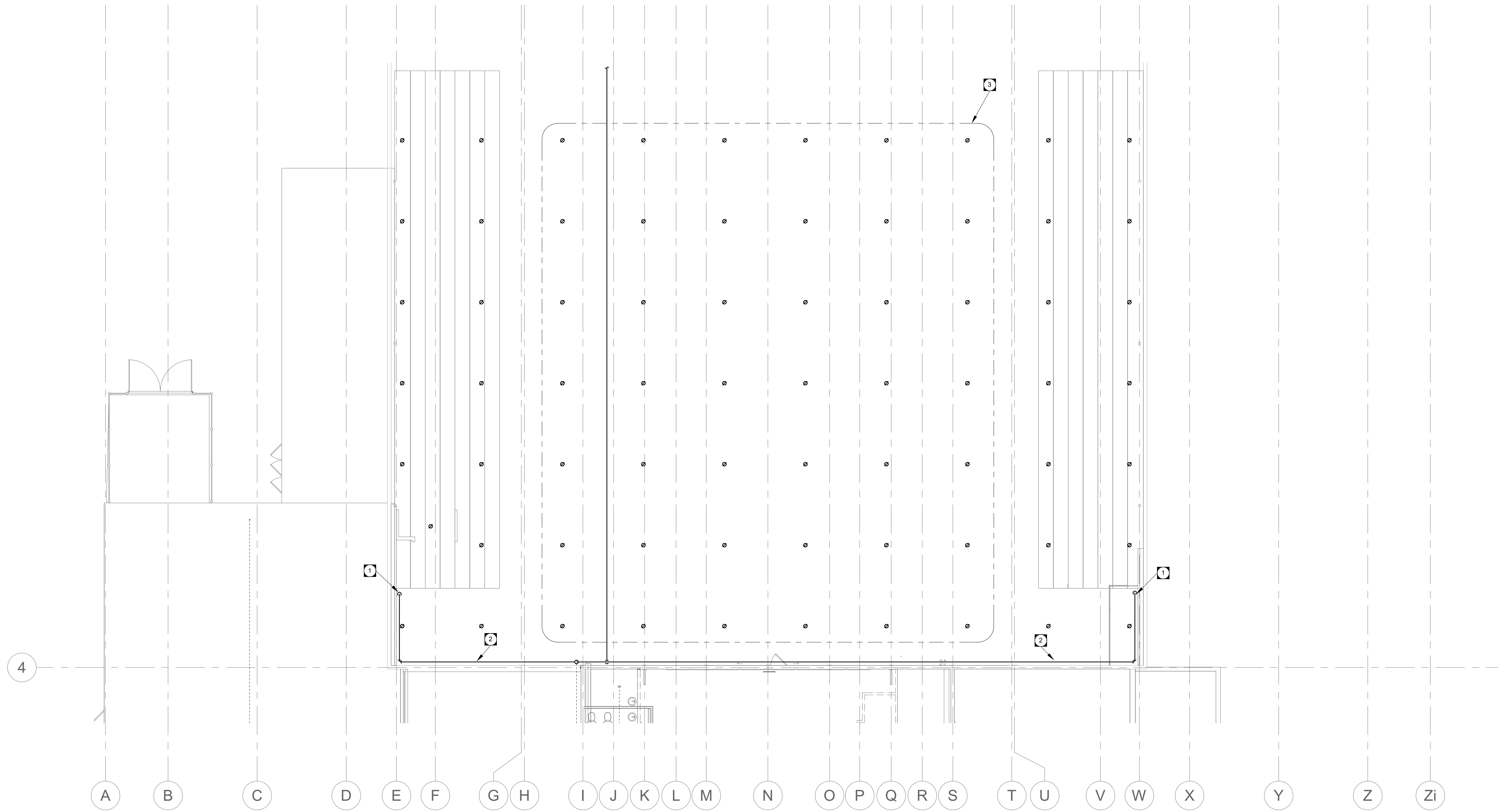
- 1 DRY SYSTEM MAINS DOWN TO SERVE LOW LEVEL ROOMS.
- 2 DRY SYSTEM MAINS AT HIGH LEVEL.
- 3 ROUTE SPRINKLER PIPING ABOVE INCLUDE SPRINKLER COVERAGE ABOVE REFLECTIVE BLANKETS OVER ICE SURFACE. PROVIDE SPRINKLER COVERAGE ABOVE AND BELOW BLANKETS IN COMPLIANCE WITH NFPA CEILING CLOUD REQUIREMENTS. CUT HOLES IN BLANKETS TO ACCOMMODATE HEADS PROVIDING COVERAGE BELOW. COORDINATE WITH ARCHITECTURAL.

PUBLICCITY

Public City Architecture Inc
 11-600 Clifton Street
 Winnipeg, Manitoba
 R3G 2X6 204 475 9323
 publiccityarchitecture.com

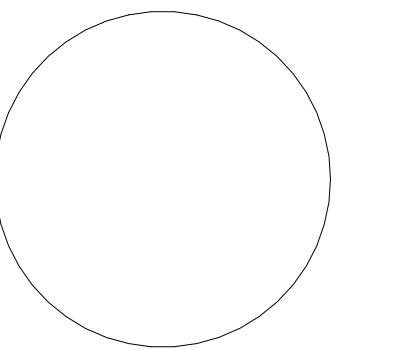
Rev. No. Date Revision Notes

0 19-11-06 Issued for Construction



Certificate of Authorization
 Epp Siepmann Engineering Inc.
 No. 4035

This is a print of a document that has been electronically authenticated with technology authorized by the APEGM. The original is in electronic form.



This drawing must not be scaled. The contractors shall verify all dimensions and other data on site prior to commencement of work. Discrepancies, errors, and omissions are to be reported to Public City Architecture Inc. prior to proceeding with the Work.

Drawings and specifications as instruments of service are the property of Public City Architecture Inc. the copyright in the same being reserved.

No reproduction or revision to these drawings may be made without the permission of Public City Architecture Inc. and when made, must bear their name. All prints to be returned to Public City Architecture Inc. upon request.

ARENA SOUTH HIGH LEVEL - FIRE PROTECTION RENOVATION 1
 3/32" = 1'-0" MF2.3

Project
 ST. JAMES CIVIC CENTRE

Drawing
 ARENA SOUTH - FIRE PROTECTION PLAN

Drawn By: GC Review By: JS

Scale: 3/32" = 1'-0" Tender No: 1176-2019

Date: 11/06/19

Sheet: MF2.3